



Box 70, Dawson, YT Y0B 1G0

Phone (867) 993-5612

Fax: (867) 993-5617

# Invoice

Date	Invoice #
5/Nov/17	WGC2017-74
Terms	Due
Net 21	26/Nov/17

## Invoice To:

White Gold Corp.  
800-1199 West Hasting Street  
Vancouver, BC V6E 3T5

Email: [clathwell@whitegoldcorp.ca](mailto:clathwell@whitegoldcorp.ca)  
[ddonofrio@poweronecapital.com](mailto:ddonofrio@poweronecapital.com)  
[david@eyecarrot.com](mailto:david@eyecarrot.com)  
[igibson@whitegoldcorp.ca](mailto:igibson@whitegoldcorp.ca)

Project	BREW	Service Agreement	White Gold Corporation	Amount
For the period covering August 30- September 10, 2017				
<b>RAB Drilling Services - 804.7 metres drilled on 9 drill holes</b>				<b>Amount</b>
Total	11.50	shifts for Drill Equipment & Wages per 12 hour shift		
9.00 Drill Rate	@	\$	4,045	\$ 36,405.00
2.50 Drill Mobilization/Standby	@	\$	3,030	\$ 7,575.00
0.00 Shut Down	@	\$	-	\$ -
14.00 Night Shift Drill Move cre	@	\$	495	\$ 6,930.00
RAB Drill Staff Travel Wages				\$ 990.00
Subtotal				<b>\$ 51,900.00</b>
<b>RAB Drilling Services - Consumables</b>				<b>Amount</b>
2232.00 Drummed Drill Diesel Fuel	@	\$1.40		\$ 3,124.80
RAB Drill Downhole Consumable Supplies/Fluids				\$ 8,161.61
Subtotal				<b>\$ 11,286.41</b>
<b>Geology, Survey Equipment and Sampling Supplies</b>				<b>Amount</b>
11.50 RAB Drill Geologist	@	\$	550	\$ 6,325.00
648.50 Surveyed Televier me	@	\$	10	\$ 6,485.00
Tech Equipment Rental: XRF/Optical Televier/DGPS/Radios				\$ 7,425.00
Sampling Supplies and QAQC Material				\$ 1,985.32
RAB Geologist Travel Wages				\$ -
Subtotal				<b>\$ 22,220.32</b>
<b>Remote Camp Services</b>				<b>Amount</b>
11.50 RAB Camp Cook/OFA	@	\$	450	\$ 5,175.00
RAB Camp Equipment Rental and Food				\$ 10,522.50
RAB Camp Cook/OFA Travel Wages				\$ -
GT Expeditor and Logistics Support				\$ 3,600.00
Subtotal				<b>\$ 19,297.50</b>
** Refer to attached breakdown ***				

GST # 881084268

Subtotal \$ 104,704.23

Make all cheques payable to:  
**Ground Truth Exploration Inc.**

GST 5% \$ 5,235.21

Thank you for your business!

**Total Due \$ 109,939.45**

YT-RAB1 BREW Project Tracking Aug 30- Sept 10, 2017				
	Units	Rate	Charge	Totals
Total meterage:	805			
<b>Travel Wages</b>				
GT RAB Lead Drill Operator	0.0	770.00	-	
GT RAB Drill Assistant	0.0	605.00	-	
GT RAB Sample Tech	0.0	495.00	-	
RAB Move Crew/Line Cutter per person per day	2.0	495.00	990.00	
Total				\$ 990.00
<b>Night Shift Drill Move Crew</b>				
RAB Move Crew/Line Cutter per person per day	14.0	495.00	6,930.00	
Total				\$ 6,930.00
<b>RAB 1</b>				
Drummed Fuel Opened	2232.0		1.40	\$ 3,124.80
Day shift Footage	0.0			
Night shift Footage	0.0			
Total Footage	2640.0			
Total Meterage	804.7			
<b>Drill Equipment &amp; Wages per 12 hour shift</b>				
Drilling Rate per 12 h shift per drill - applicable for shifts where drilling operations are being carried out	9.0	4,045.00	36,405.00	
Mobilization/Standby Rate per 12 h shift per drill – applicable for shifts where no drilling operations are being carried out due to weather or Company imposed delays	2.5	3,030.00	7,575.00	
				\$ 43,980.00
<b>Consumable Supplies/Fluids</b>				
NWJ 5' Drill Rod	2.0	276.67	553.34	
BOP Rubber	2.0	33.18	66.36	
Matex Hammer Oil-Per liter	17.0	4.03	68.51	
Mitsubishi 90mm Eccentric Pilot Bit (ODEX)	1.0	1,375.00	1,375.00	
MC30 Mincon DTH Hammer	1.0	3,850.00	3,850.00	
MC30 Driver Chuck	1.0	400.40	400.40	
MC30 Drill Bits 89mm Drill Bit	1.0	616.00	616.00	
MC30 Drill Bits 90mm Drill Bit	2.0	616.00	1,232.00	
Total				\$ 8,161.61

RAB \$ 63,186.41

YT-RAB1 BREW Project Tracking Aug 30- Sept 10, 2017				
	Units	Rate	Charge	Totals
<b>Total meterage:</b>	<b>804.7</b>			
<b>Field Wages</b>				
RAB Geologist (Logging/XRF/Televiewer) - Quang Ngo	11.5	550.00	6,325.00	
Camp Coordinator - Kendra Franks	11.5	450.00	5,175.00	
GTE Expediting - Mobe/Demobe support, resupply, samples, logistics	48.0	75.00	3,600.00	
Total				<b>15,100.00</b>
<b>Travel Wages</b>				
RAB Geologist (Logging/XRF/Televiewer)	0.0	550.00	-	
Camp Coordinator	0.0	450.00	-	
Total				-
<b>Remote Camp Support and Equipment Rental</b>				
Chainsaw for helipads/camp (per unit per day)	23.0	50.00	1,150.00	
Remote Camp Setup for RAB Crew (per man-day)	80.5	50.00	4,025.00	
Food (per man-day)	80.5	60.00	4,830.00	
Satellite Internet - per day (connected by Staff)	11.5	45.00	517.50	
				<b>\$ 10,522.50</b>
Laptop(s) - Televiewer Toughbook, XRF, Data QC	11.0	75.00	825.00	
Precision DGPS for Collar Location Surveys	11.0	50.00	550.00	
Field Portable XRF in Camp for Daily XRF Logs (per day)	11.0	300.00	3,300.00	
Optical Downhole Televiewing Equipment (per day)	11.0	250.00	2,750.00	
				<b>\$ 7,425.00</b>
3D Oriented Digital Core, incl. surveys & interpretation	648.5	10.00	6,485.00	
				<b>\$ 6,485.00</b>
<b>Sampling Supplies</b>				
Samples Collected	536.0	3.00	1,608.02	
QA/QC: Reference Material- Blank and Standard 1:50 Insertion (per sample)	27.0	14.00	377.30	
Total				<b>1,985.32</b>
<b>Transportation Support</b>				
1 Ton Diesel 4x4 Truck	0.0	150.00	-	
Fuel/Usage charge per km per vehicle	0.0	0.70	-	
Truck Standby Rate	0.0	75.00	-	
C5500 Flat Deck Picker Truck	0.0	150.00	-	
20ft Flat Deck Trailer per unit per day	0.0	100.00	-	
Total				<b>\$ -</b>

Total: **\$ 41,517.82**

# Brew Property (BRW) RAB 2017



■

BRW RAB 2017 (9)

**Gold in Soil (Au ppb)**

■

> 75 (99th percentile)

■

48 - 75 (98th percentile)

■

24 - 48 (95th percentile)

■

12 - 24 (90th percentile)

■

< 12

□

Property Boundary

17BRW003  
(50/-60)  
100.6m

17BRW004  
(220/-60)  
100.6m

17BRW001  
(50/-60)  
100.6m

17BRW002  
(50/-60)  
100.6m

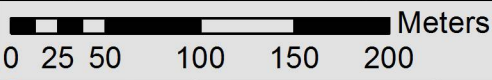
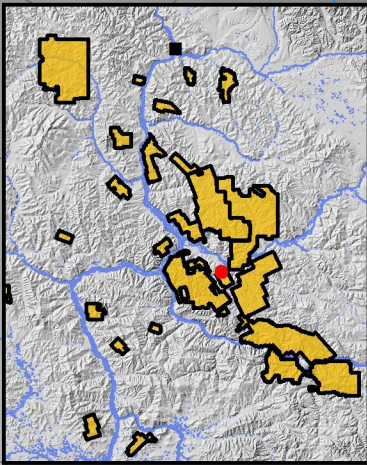
17BRW005  
(50/-60)  
100.6m

17BRW007  
(50/-60)  
88.4m

17BRW006  
(50/-60)  
96m

17BRW008  
(50/-60)  
68.6m

17BRW009  
(50/-60)  
48.8m



hole_id	project	date	meters
17BRW001	BRW	2017-08-31	100.6
17BRW002	BRW	2017-09-02	100.6
17BRW003	BRW	2017-09-03	100.6
17BRW004	BRW	2017-09-04	100.6
17BRW005	BRW	2017-09-05	100.6
17BRW006	BRW	2017-09-06	96.0
17BRW007	BRW	2017-09-07	88.4
17BRW008	BRW	2017-09-08	68.6
17BRW009	BRW	2017-09-09	48.8
			804.7